

Image Viewer Help

Image Viewer was originally designed purely as a viewer for weather satellite images.

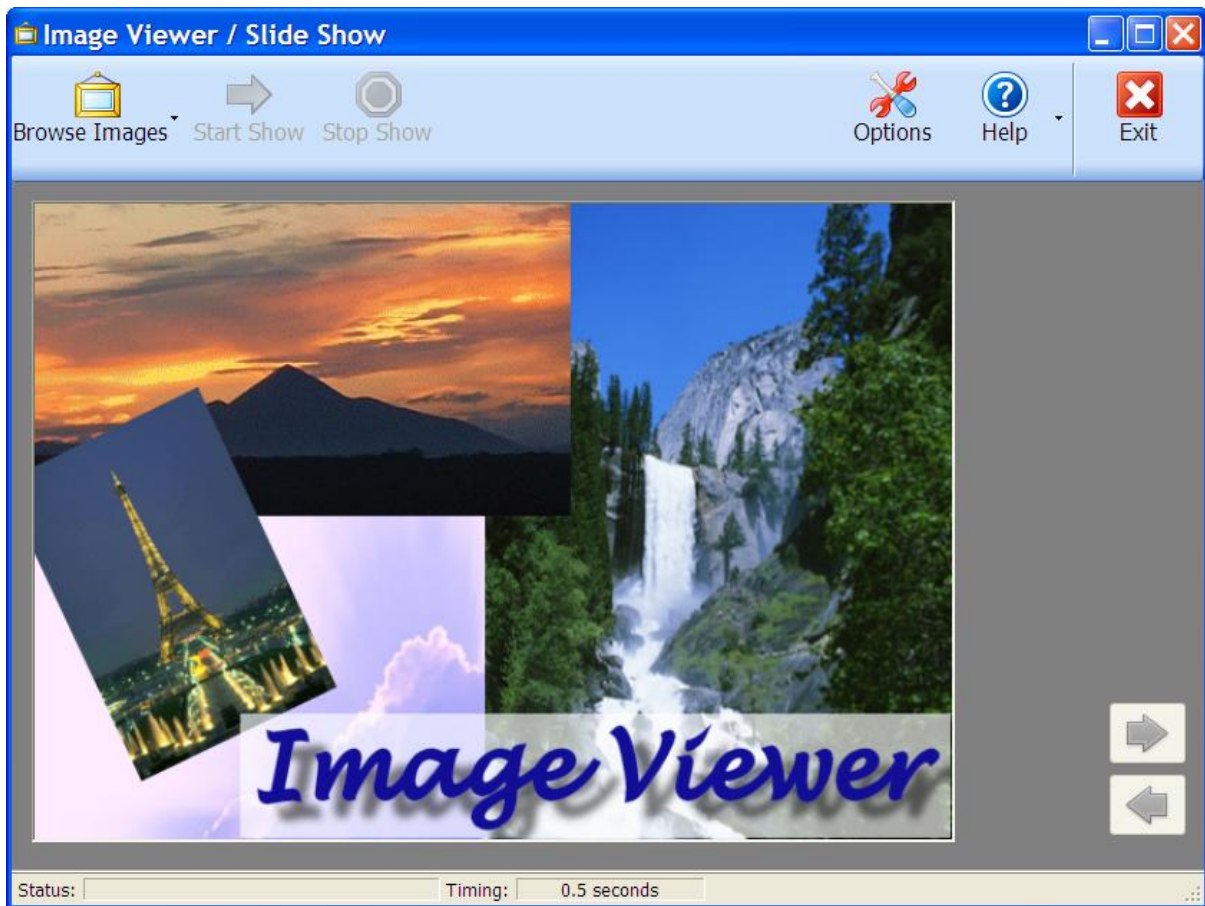
The reasoning was that it takes too long to assemble the traditional type of 'slide show', with transitions, music etc that are not needed for the purpose. One of the other problems was speed. Most slide show makers will not allow you to view the show with transitions of less than one second.

Enter **Image Viewer**, with:

- Transitions of as little as 1/10th of a second.
- These can even be changed as it is running!
- No laborious compilations needed, just select the images and away you go.
- Essentially a simple viewer designed for speed, but not for permanence.

Now we have added support for BMP (Bitmap) and PNG (Portable Network Graphics) files in addition to JPG files, so all those Snagit captures of Nessie can be viewed as well, and even your family snaps! We also added GIF images as well because we use this for Met Eireann rain radar pictures. (Each to their own!)

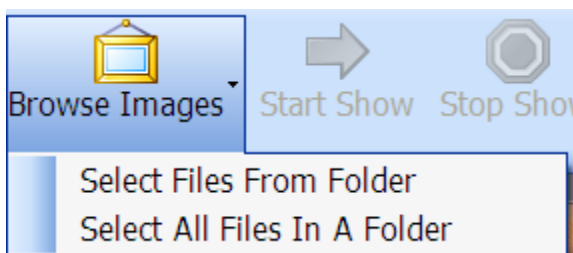
This is the screen you will see when you start the Image Viewer program.



The controls are self explanatory, but just to make sure we will go through them here.

Browse Images

This is actually two menu items. One allows you to select one or more images from within a folder, and the other allows you to select a folder and it will then display the content using any permitted formats it finds.



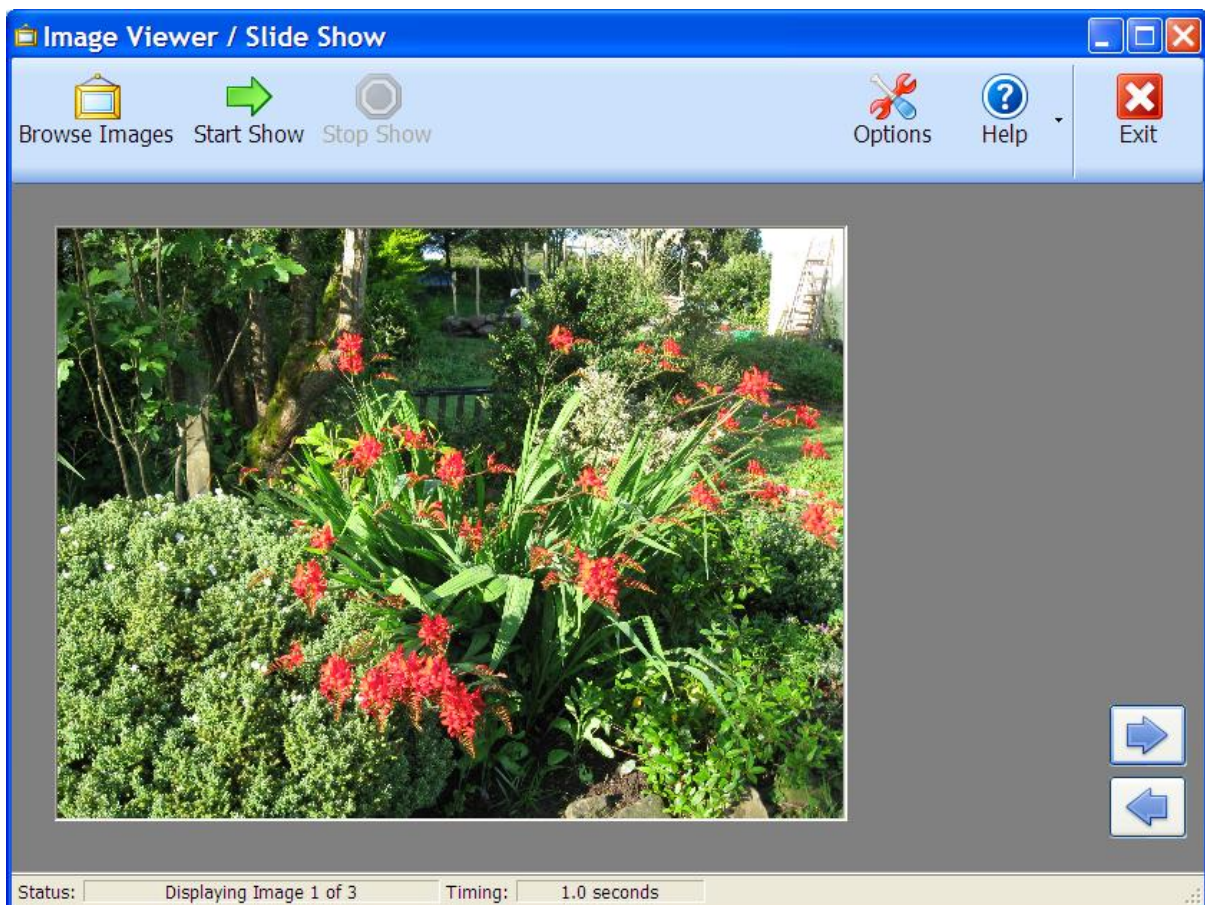
Opens a file browser so you can select what you wish to display, or a folder browser. Images in the file browser may be bitmap files (.bmp), JPEG or JPG files (.jpg), or portable network graphics files (.png)

There is no restriction to the size of file, or to the number of files that you can load. The reason for this is because the files are actually only 'loaded' one at a time. The Image Viewer program maintains a list of the files, but does not load them until

required. The reason the folder selection was added was because you can get just too many files for the Windows file open dialog to work properly. There is not such problem with the folder browser. Remember that when using the folder browser it does not matter what the contents of the folder are. The program will only select the file types mentioned above.

The Image Viewer program can cope with a mixture of landscape and portrait images, and resizes to suit the images being shown. Just in case the first image is portrait it checks to see if there are any landscape images and resizes to suit those otherwise the landscape images would be very small.

Once images are selected the screen will look like this:



Start Show

This sets the slide show going. The images will change according to the time you have set. You can see the current transition time at the bottom of the screen. As the images roll round you can also see on the bottom line the number of the current image and the total number of images.

Stop Show

This stops the slide show. Depending on the settings you have chosen in Options the last image viewed stays on screen, or the first image in the set is displayed.

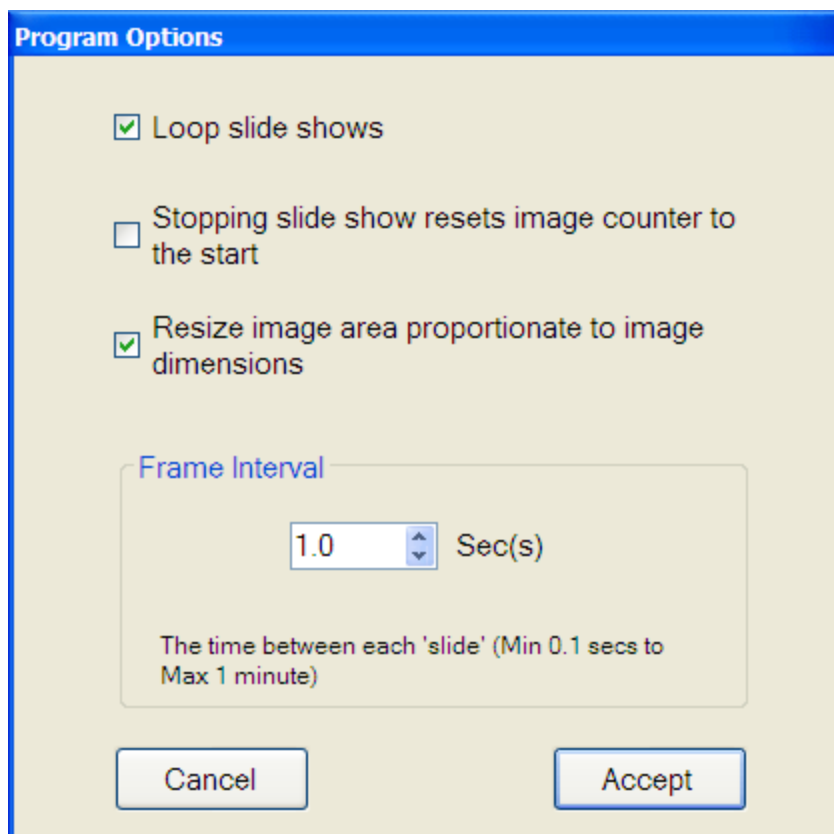
The Forward and Back Buttons.

With these you can through the pictures in any direction you like. The display wraps round from first image to last image if going backwards, or last image to first image if going forwards.

You can restart the show at any point and it will continue from where you are currently in the set

Options

Most of these options we have covered above, and here is where you set them.



1. Loop slide shows

If ticked, then when the last image is displayed the slide show starts again at the beginning. If not ticked it just stops when it gets to the last image.

2. Stopping slide show resets image counter to the start.

Perhaps we could have described that better, but basically what it means is that if ticked then when the slide show is stopped the first image in the set is displayed. If not ticked it just stops where it is.

3. Resize image area proportionate to image dimensions.

The screen is set at start to display EUMETSAT weather satellite images, because as we said that is how the program came about. These images are about of a ratio width against height of 1.43. Family snaps could be 1.5 or 1.33 depending on the camera so ticking this box will mean the program will try and get your image on screen in the right proportions.

4. Frame Interval.

Or the time between image transitions. As it says on the screen shot image timings can be from 0.1 seconds (1/10th sec) to 60 seconds or 1 minute. Some large pictures can cause memory problems if the display is moving too fast as the program cannot remove the old image fast enough, so to try and combat this we have restricted larger images to a minimum of 1 second between changes.

One other thing that you should be aware of is that the program relinquishes control between each frame so that you computer has a chance to do other things as well. Here again with larger images you may notice a slight jerkiness if you have other programs running as well.

Exit

Quits the program. That's it Aloha!